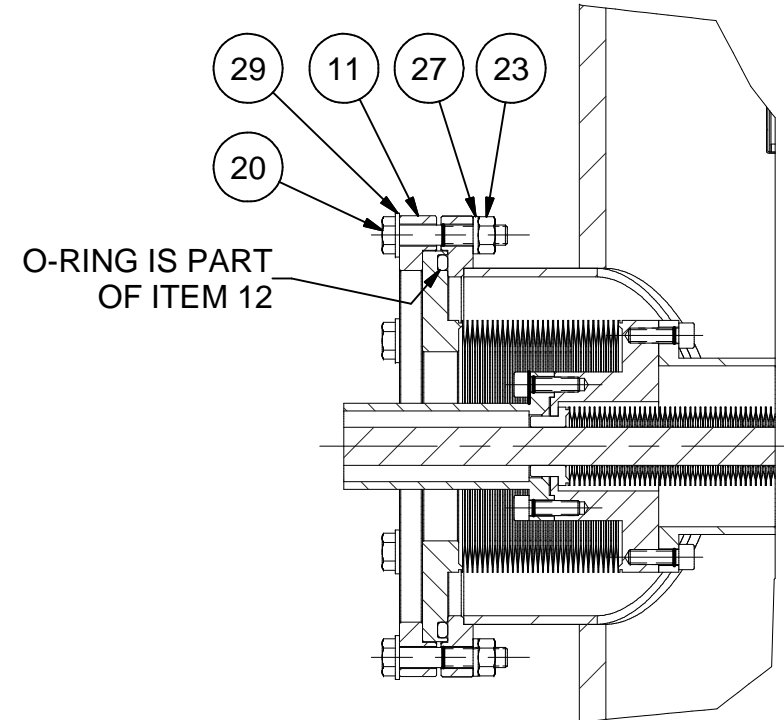
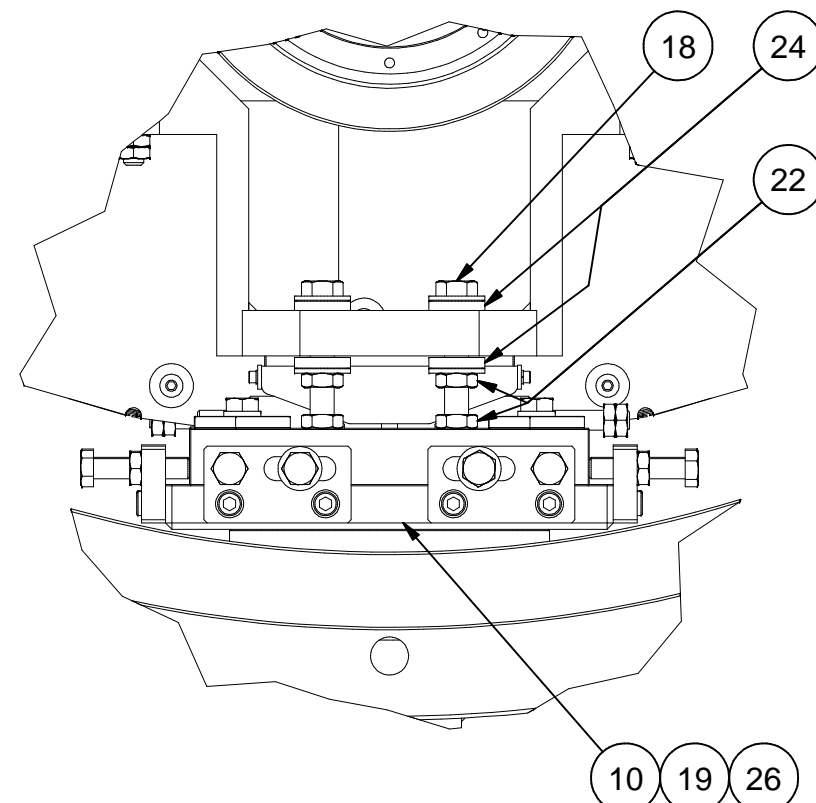
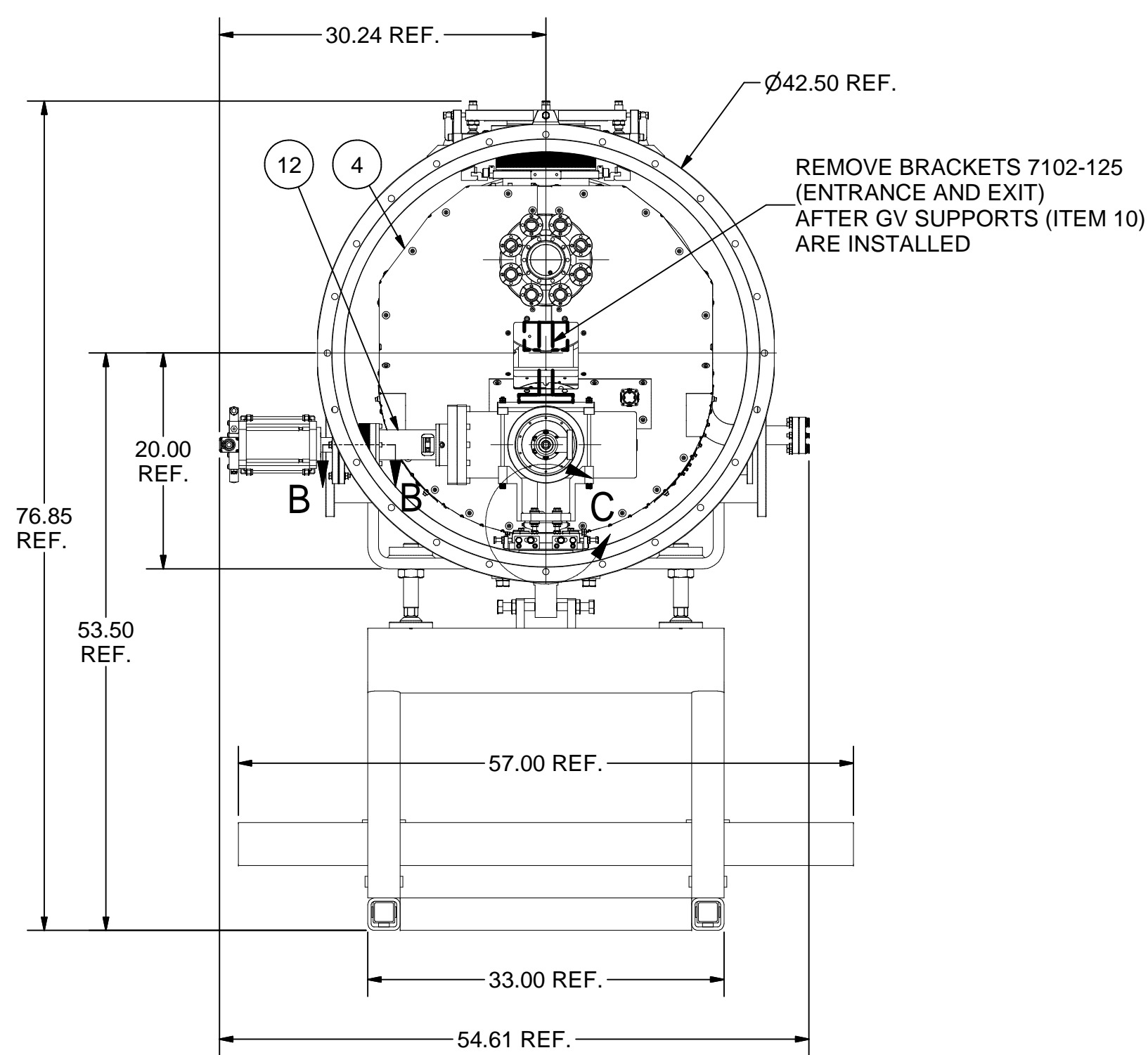


REVISIONS				
SYM.	ZONE	DESCRIPTION	DATE	APP.

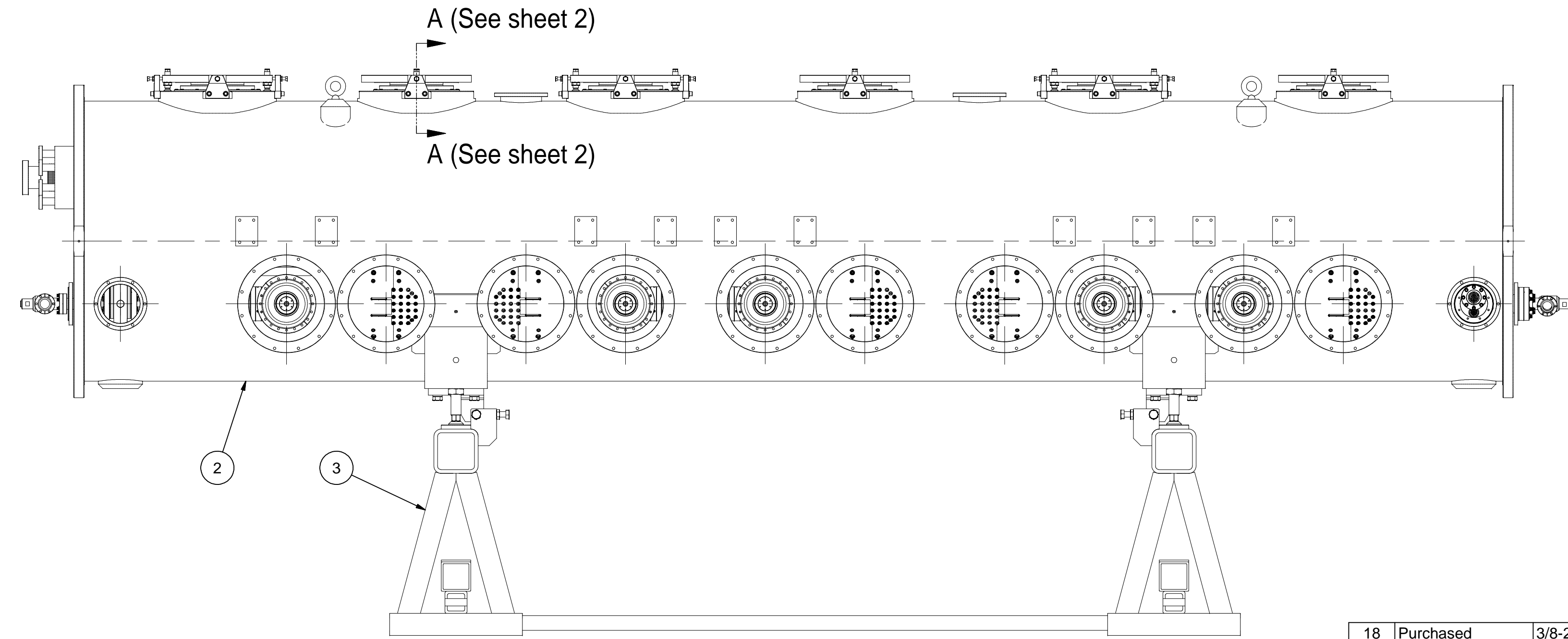
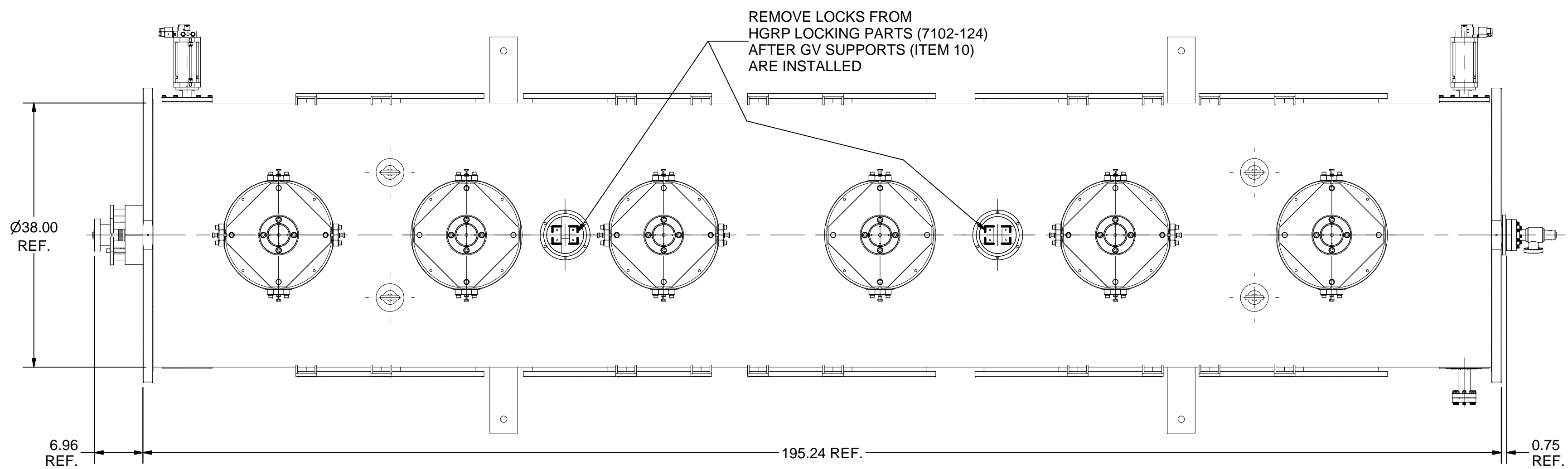


SECTION B-B
SCALE 1:3



DETAIL C
SCALE 1:3

- 1 ASSEMBLY, STEP 11
- FILE NAME: 7102-100
SHEET NO.: 1
DFT. SCALE: 1:12.5
MATERIAL:
QTY: 1 PER CRYOMODULE
NOTES: 1. ALIGN AND CONNECT RAILS "D" OF ITEM 2 (SEE SHEET 2) WITH RAILS ON ERL CRYOMODULE ASSEMBLY FIXTURE.
2. ROLL ASSEMBLY, STEP 10 (ITEM 4) IN VACUUM VESSEL (ITEM 2).

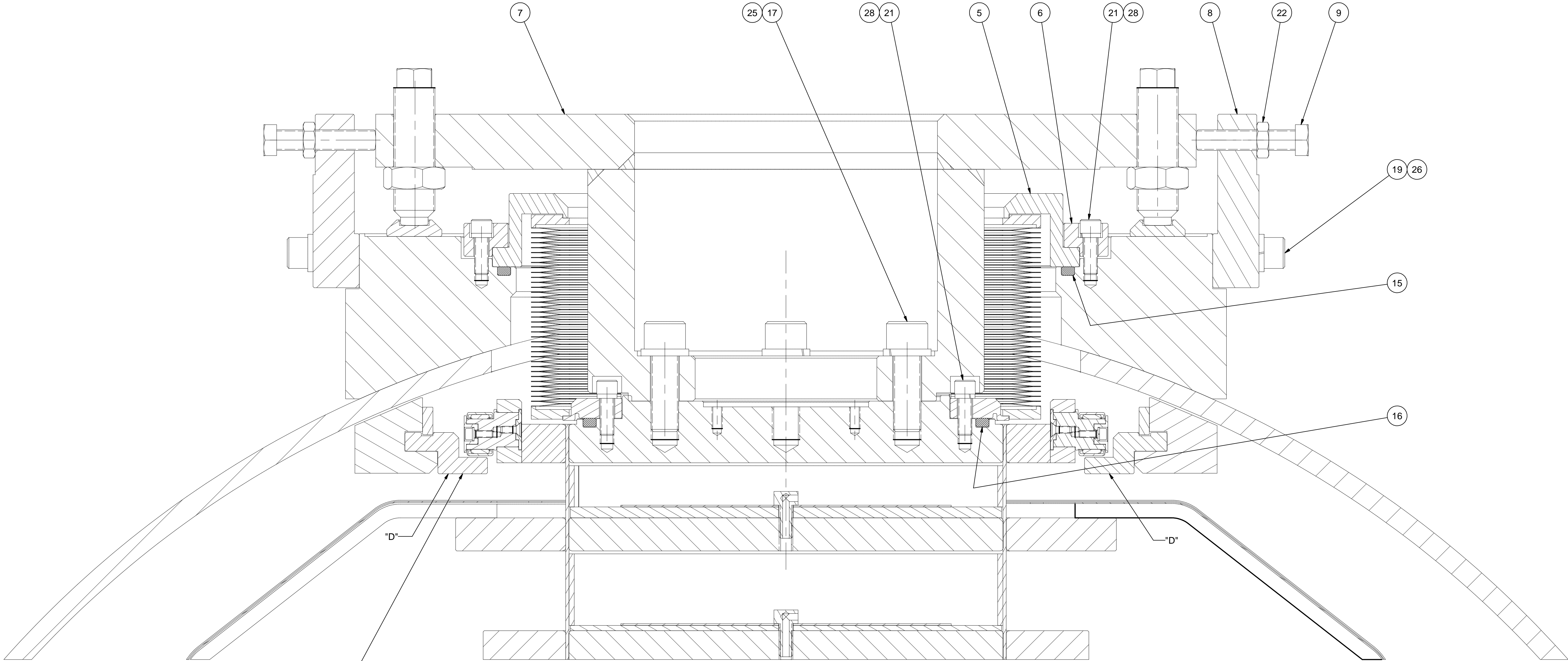


29	Purchased	5/16 Washer, SS	12		McMaster-Carr's 96659A107, or equiv.
28	Purchased	1/4 Spring Washer for Socket Head Cap Screws, SS	144		McMaster-Carr's 98437A110, or equiv.
27	Purchased	5/16 Spring Washer, SS	12		McMaster-Carr's 92146A030, or equiv.
26	Purchased	3/8 Spring Washer, SS	44		McMaster-Carr's 92146A031
25	Purchased	1/2 Spring Washer, SS	24		McMaster-Carr's 92146A033, or equiv.
24	Purchased	5/16-3/8 Self-Aligning Washer, 18-8 St.St.	16		McMaster-Carr's 91944A450, or equiv.
23	Purchased	5/16-24 Hex Nut, SS	12		McMaster-Carr's 91845A115, or equiv.
22	Purchased	3/8-24 Hex Jam Nut, SS	34		McMaster-Carr's 91847A431, or equiv.
21	Purchased	1/4-28 x 3/4 Socket Head Cap Screw, SS	144		McMaster-Carr's 92196A321, or equiv.
20	Purchased	5/16-24 x 1-3/4 Hex Head Cap Screw, SS	12		McMaster-Carr's 92198A308, or equiv.
19	Purchased	3/8-24 x 1-1/2 Socket Head Cap Screw, SS	44		McMaster-Carr's 92196A363

18	Purchased	3/8-24 x 3 Hex Head Cap Screw, SS	8		McMaster-Carr's 92240A362
17	Purchased	1/2-20 x 1-1/2 Socket Head Cap Screw, SS	24		McMaster-Carr's 92196A387
16	Purchased	7" ID x 3/16 W (#365) O-Ring	6		Viton or EPDM
15	Purchased	10" ID x 3/16 W (# 377) O-Ring	6		Viton or EPDM
12	Purchased	ERL 63 MM RF GATE VALVE SHAFT EXTENSION	2		
11	7110-008 (It.39)	GATE VALVE PORT ROTATABLE FLANGE	2		
10	7110-008 (It.2)	GATE VALVE SUPPORT SUB-ASM	2		
9	7110-009 (It.22)	PUSH SCREW	18		
8	7110-009 (It.21)	BRACKET	18		
7	7110-009 (It.1)	SUPPORT PLATE SUB-ASSEMBLY	6		
6	7110-009 (It.54)	BELLOWS UNIT ROTATABLE FLANGE	6		
5	7110-009 (It.51)	BELLOWS SUB-ASSEMBLY	6		
4	7102-099	ASSEMBLY, STEP 10	1		
3	7102-128	ERL INJECTOR SUPPORT	1		
2	7102-053	VACUUM VESSEL	1		
1	7102-100 (Sh.1)	ASSEMBLY, STEP 11	1		

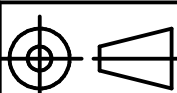

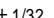


ITEM	DWG. NO.	DESCRIPTION	G1	G2	G3	REMARKS	REV.
			QUANTITY				
PRINT DISTR.	CR-1	PLOT DATE: 1/3/08 CAD FILE NAME: 7102-100.idw					
7102-100 SH. NO. 1 OF 2	UNLESS OTHERWISE SPECIFIED: DIMENSIONS ARE IN INCHES: TOLERANCES ON: .0 ± .02 .00 ± .010 .000 ± .005 FRACTIONS ± 1/32 ANGLES ± 0.5° ALL SURFACES		<div><div>CORNELL UNIVERSITY</div><div>LEPP</div><div>LABORATORY FOR ELEMENTARY-PARTICLE PHYSICS</div></div> <div>CORNELL UNIVERSITY Floyd R. Newman Laboratory Ithaca, NY 14853</div> <div>ERL INJECTOR CRYOMODULE ASSEMBLY, STEP 11 ASSEMBLY, STEP 11: ORTHO VIEWS, SECTION B-B, DETAIL C</div>				
	CHECKED BY: VM APPROVED BY: VM	DRAWN BY vm	DRAWN FOR M.Liepe	DATE 1/2/08	SCALE D	7102-100 SH. NO. 1 OF 2	REV.

REVISIONS			
SYM.	ZONE	DESCRIPTION	DATE APP.



REMOVE RAILS "D"
AFTER HGRP SUPPORT PLATES (ITEM 7)
ARE INSTALLED

SECTION A-A
(SEE SHEET 1)
SCALE 1:1

	ITEM	DWG. NO.	DESCRIPTION			G1	G2	G3	REMARKS	REV.
							QUANTITY			
	PRINT DISTR.	PLOT DATE: 1/3/08 CAD FILE NAME: 7102-100.idw								
	7102-100 SH. NO. 2 OF 2	CR-1	UNLESS OTHERWISE SPECIFIED: DIMENSIONS ARE IN INCHES: TOLERANCES ON: .0 ± .02 .00 ± .010 .000 ± .005 FRACTIONS ± 1/32 ANGLES ± 0.5° ALL SURFACES 		<div><div><div>CORNELL UNIVERSITY Floyd R. Newman Laboratory Ithaca, NY 14853</div></div><div>ERL INJECTOR CRYOMODULE ASSEMBLY, STEP 11 SECTION A-A</div></div>					
CHECKED BY: VM		DRAWN BY	DRAWN FOR	DATE	SCALE		7102-100	REV.		
APPROVED BY: VM		vm	M.Liepe	1/2/08						
REV.	SH. NO. 2 OF 2									